

FORM NO 1.

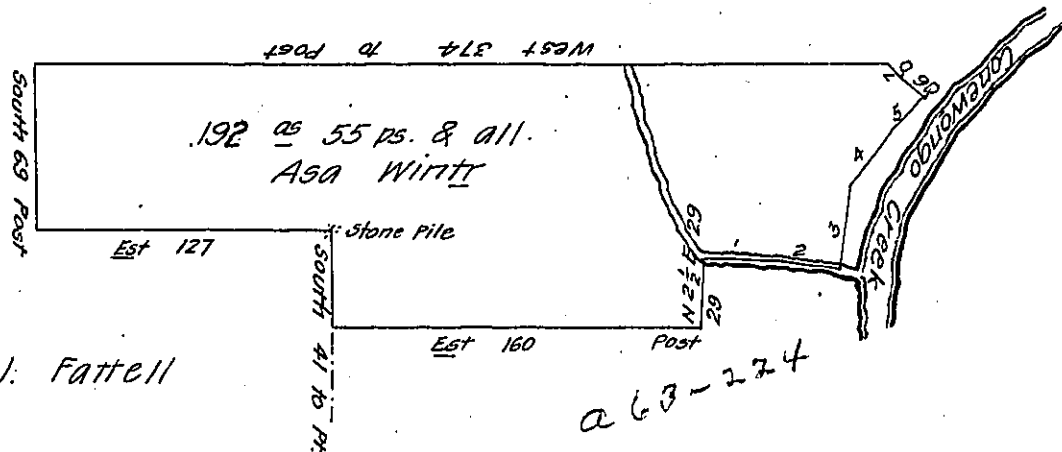
COURSES down the Run
& up the Creek

- 1 S 87 1/2 E 32
- 2 S 81 E 25
- 3 N 10 E 36
- 4 N 38 E 31
- 5 N 43 E 19 to Buttonwood
- 6 N 43 W 15 B. Oak Bush.
- 7 N 11 W 4 Past

S. OILY

C 13-271

J. M. BARRY



J. Fattell

a 63-274

Jefferson Smith

C 74-67

Draft of a tract of land situate in Cornewango township Warren
 County & West of the Cornewango Creek containing one hundred ninety two acres
 fifty five perches & all^s surveyed for Asa Winter on his Settlement and im-
 provement 16 Dec^r A.D. 1828

John Andrews D.S.

Gab. Hiestor Esq^r

Warren County

Surveyor General.

IN TESTIMONY that the above is a copy of the original remaining on file in
 the Department of Internal Affairs of Pennsylvania, made
 conformably to an Act of Assembly approved the 16th day of
 February, 1833, I have hereunto set my Hand and caused
 the Seal of said Department to be affixed at Harrisburg,
 this thirty first day of July 1907

Henry Houch
 Secretary of Internal Affairs.